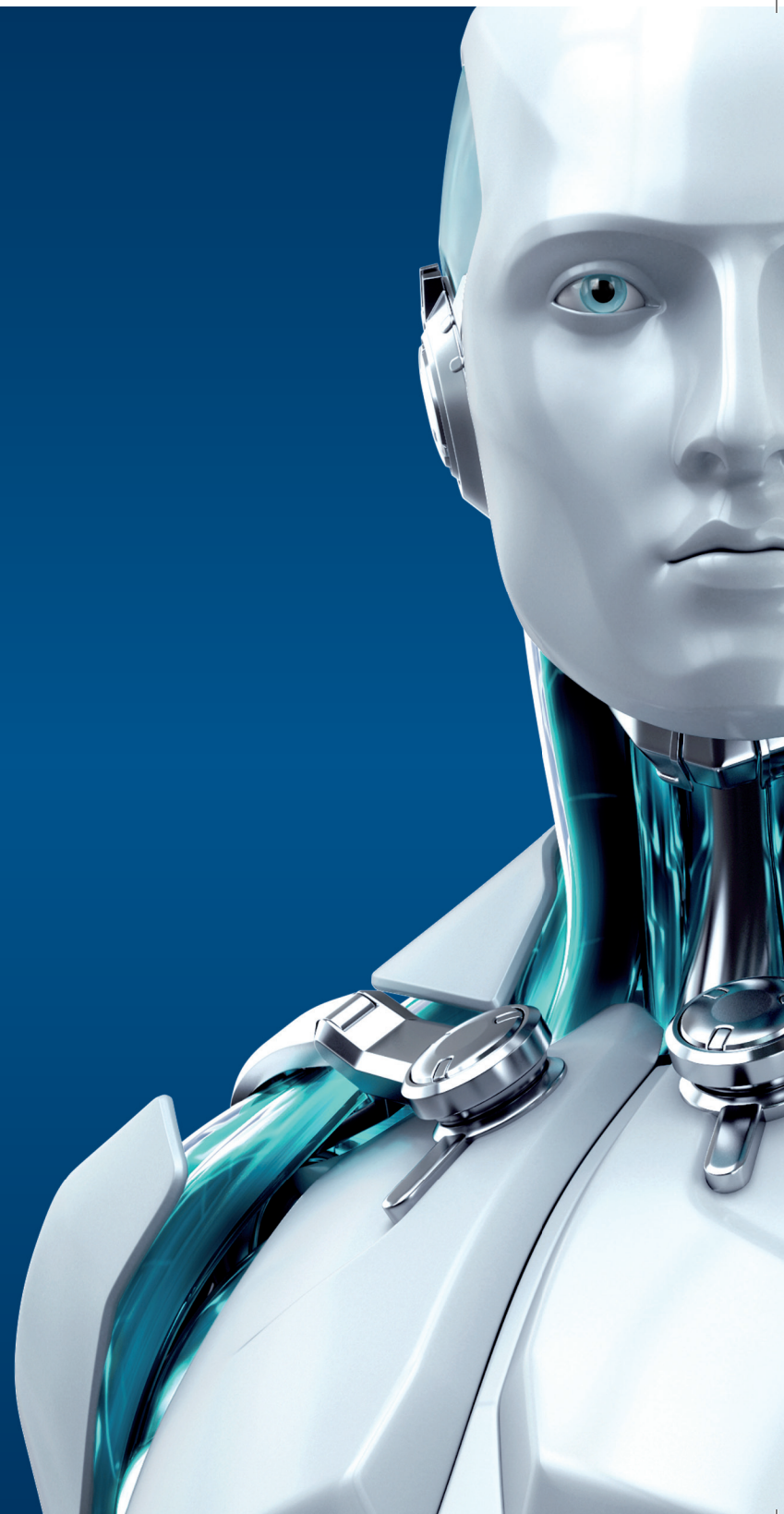




# SECURE AUTHENTICATION

ENJOY SAFER TECHNOLOGY™





## SECURE AUTHENTICATION

ESET Secure Authentication is a mobile-based two-factor authentication system which provides additional security for accessing to company network and sensitive data, safe and hassle-free.

The solution consists of the server side and the client side - the latter comes in the form of a mobile app. The option to generate OTPs is not limited to the mobile app only - SMS messages or existing hardware tokens can also be used.

## Ultra-strong authentication to protect network access and assets

You can use ESET Secure Authentication for:

- Accessing your company's VPN
- Remote Desktop Protocol
- Additional authentication for desktop login (signing into an operating system)
- Web/cloud services via Microsoft ADFS 3.0, such as Office 365 and Google Apps
- Various Microsoft Web Apps, such as Outlook Web Access (OWA)
- Exchange Control Panel 2010 & Exchange Administrator Centre 2013
- VMware Horizon View
- RADIUS-based services

ESET Secure Authentication also comes with an API to integrate it with your existing Active Directory-based authentication, as well as with an SDK that easily implements into any proprietary system.

### Business benefits

- Helps prevent the risk of breaches with unique passwords for each access
- Protects from poor password practices
- Flexibility to define your own OTP delivery channel (e.g. your own SMS gateway)
- Saves costs - no additional hardware needed
- Easy to migrate to and use
- Supports existing hardware tokens to meet compliance requirements
- Also adds 2FA to your cloud applications, such as Office 365 or Google app

### IT benefits

- API/SDK for easy integration into proprietary software and business tools
- App works without internet connection (once downloaded)
- Works with a broad range of VPN appliances
- Supports most types of mobile operating systems
- Global technical support in local languages
- Out-of-the-box solution
- Increases productivity and reduces unnecessary friction when accessing trusted sites, thanks to IP Whitelisting
- Tools for deployment and configuration in large user environment

# Datasheet

---

<b>Two-factor Authentication</b>	<p>Mobile-based, two-factor (2FA) one-time password (OTP) authentication for a higher level of security</p> <p>Native support for a broad range of platforms (see Supported platforms overview)</p> <p>Software only solution – no need to carry additional device or token</p> <p>Convenient for the mobile workforce</p> <p>Support for hardware tokens</p>
<b>Client Side (mobile app)</b>	<p>One-tap installation, simple and effective user interface</p> <p>Delivery of OTP via client application, SMS or hardware token</p> <p>OTP generation works independently of an available internet connection</p> <p>Compatible with any mobile phone supporting SMS messaging</p> <p>Supports a broad range of mobile operating systems</p> <p>PIN-protected access to prevent fraud in case of device theft or loss</p> <p>Serves multiple OTP zones, e.g. OWA access, VPN access, and others</p> <p>Apps available in these languages: English, German, Russian, French, Spanish, Slovak</p>
<b>Server Side</b>	<p>Out-of-the-box solution</p> <p>Easy double-click installation and setup</p> <p>The installer automatically recognizes OS and selects all suitable components</p> <p>Interactive installer, drop-in installation into ADFS</p>
<b>Custom Integration Options</b>	<p>In Active Directory environment, use either ESET Secure Authentication API or User Management API for easy integration into proprietary systems</p> <p>SDK allows for implementation for non-Active Directory users</p>
<b>Remote Management</b>	<p>Supports Microsoft Management Console (MMC)</p> <p>Active Directory integration</p> <p>ESET Secure Authentication extends Active Directory Users &amp; Computers (ADUC plugin) with additional features to enable managing the users' two-factor authentication settings</p>



## Supported platforms overview

<b>Remote Login Platforms</b>	<b>Remote Desktop Protocol</b>	
	<b>VPN Protection:</b>	
	Barracuda, Cisco ASA, Citrix Access Gateway, Citrix NetScaler, Check Point Software, Cyberoam, F5 FirePass, Fortinet FortiGate, Juniper, Palo Alto, SonicWall	
<b>Local Login Protection (Windows)</b>	Windows 7 and later	Windows Server 2008 R2 and later
<b>Active Directory Federation Services</b>	Microsoft ADFS 3.0 (Windows Server 2012 R2)	
<b>Supported VDI Platforms</b>	VMware Horizon View	Citrix XenApp
<b>Microsoft Web Applications</b>	Microsoft Web Applications	Microsoft Dynamics CRM 2011, 2013, 2015
	Outlook Web Access	Microsoft SharePoint 2010, 2013
	Microsoft Exchange 2010	Microsoft Remote Desktop Web Access
	Outlook Web App	Microsoft Terminal Services Web Access
	Exchange Control Panel	Microsoft Remote Web Access
	Microsoft Exchange 2013	
	Outlook Web App	
	Exchange Admin Center	
<b>Custom Integration</b>	ESET Secure Authentication easily integrates with your RADIUS-based services, as well as via the ESET Secure Authentication API or the User Management API to your existing Active Directory-based authentication. Non Active Directory customers with custom systems can use the easy to deploy SDK.	
<b>Operating Systems (Server Side)</b>	Windows Server 2003(32&64bit), 2003 R2 (32&64bit), 2008 (32&64bit), 2008 R2, 2012, 2012 R2 Windows Small Business Server 2008, 2011 Windows Server 2012 Essentials, 2012 R2 Essentials  Management tools are also supported on client operating systems from Windows XP SP3 onwards, in both 32-bit and 64-bit versions.	
<b>Mobile Phone Operating Systems (Client Side App)</b>	iOS 4.3 or higher (iPhone)	BlackBerry 4.3 to 7.1 and 10 and higher
	Android 2.1 or higher	Symbian - all supporting J2ME
	Windows Phone 7 or newer	All J2ME enabled phones
	Windows Mobile 6	

Copyright © 1992 – 2016 ESET, spol. s r. o. ESET, ESET logo, ESET android figure, NOD32, ESET Smart Security, SysInspector, ThreatSense, ThreatSense.Net, LiveGrid, LiveGrid logo and/or other mentioned products of ESET, spol. s r. o., are registered trademarks of ESET, spol. s r. o. Windows® is a trademark of the Microsoft group of companies. Other here mentioned companies or products might be registered trademarks of their proprietors. Produced according to quality standards of ISO 9001:2008.